



VERSA™

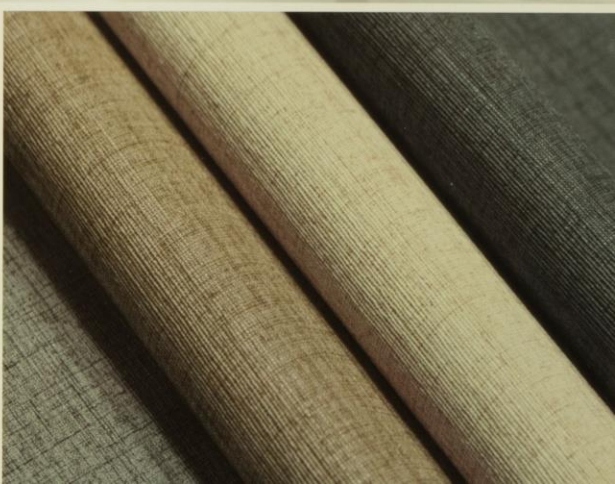
DESIGNED SURFACES

Since 1950

VERSA I

Type I

Fabric Backed Vinyl Wallcovering



Fiji



Bristol



Brio



Halcyon



Omni



Ravelle Texture



Skylines



Regency Silk



Embarcadero



Zephyr

FIJI



Specifications

- Width – 52/54 in (132/137 cm)
- Backing – Osnaburg
- Installation – Reverse Hang / Radom Match Match
- Weight – 15 OZ/LY (340 gr/m²)
- Hanging Instructions – [download](#)
- Warranty – [download](#)
- Packing: 30 LY(37.4 m²) / Roll

Environmental Attributes

- Low VOC meets CA01350
- Meets LEED criteria for EQc2
- Meets NSF/ANSI 342 certification; check with distributor for actual level
- Meets GB18585-2001

Fire Resistance Attributes

- USA ASTM E84 Class A
- China GB8624 Class B1
- European EN13501 Class B1
- British BS 476 Part 6 & Part 7 Class 0



燃烧性能等级标识





V15-101



V15-102



V15-103



V15-104



V15-105



V15-106

Bristol



Specifications

- Width – 52/54 in (132/137 cm)
- Backing – Osnaburg
- Installation – Reverse Hang / Radom Match Match
- Weight – 15 OZ/LY (340 gr/m²)
- Hanging Instructions – [download](#)
- Warranty – [download](#)
- Paking: 30 LY(37.4 m²) / Roll

Environmental Attributes

- Low VOC meets CA01350
- Meets LEED criteria for EQc2
- Meets NSF/ANSI 342 certification; check with distributor for actual level
- Meets GB18585-2001

Fire Resistance Attributes

- USA ASTM E84 Class A
- China GB8624 Class B1
- European EN13501 Class B1
- British BS 476 Part 6 & Part 7 Class 0



燃烧性能等级标识





V15-107



V15-108



V15-109



V15-110



V15-111

Brio



Specifications

- Width – 52/54 in (132/137 cm)
- Backing – Osnaburg
- Installation – Reverse Hang / Radom Match Match
- Weight – 15 OZ/LY (340 gr/m²)
- Hanging Instructions – [download](#)
- Warranty – [download](#)
- ~~Packing: 30 LY(37.4 m²) / Roll~~

Environmental Attributes

- Low VOC meets CA01350
- Meets LEED criteria for EQc2
- Meets NSF/ANSI 342 certification; check with distributor for actual level
- Meets GB18585-2001

Fire Resistance Attributes

- USA ASTM E84 Class A
- China GB8624 Class B1
- European EN13501 Class B1
- British BS 476 Part 6 & Part 7 Class 0



燃烧性能等级标识





V15-112



V15-113



V15-114



V15-115



V15-116

Halcyon



Specifications

- Width – 52/54 in (132/137 cm)
- Backing – Osnaburg
- Installation – Reverse Hang / Radom Match
- Weight – 15 OZ/LY (340 gr/m²)
- Hanging Instructions – [download](#)
- Warranty – [download](#)
- Packing: 30 LY(37.4 m²) / Roll

Environmental Attributes

- Low VOC meets CA01350
- Meets LEED criteria for EQc2
- Meets NSF/ANSI 342 certification; check with distributor for actual level
- Meets GB18585-2001

Fire Resistance Attributes

- USA ASTM E84 Class A
- China GB8624 Class B1
- European EN13501 Class B1
- British BS 476 Part 6 & Part 7 Class 0



燃烧性能等级标识





V15-117



V15-118



V15-119



V15-120



V15-121

Omni



Specifications

- Width – 52/54 in (132/137 cm)
- Backing – Osnaburg
- Installation – Straight Hand/ Radom Match Match
- Weight – 15 OZ/LY (340 gr/m²)
- Hanging Instructions – [download](#)
- Warranty – [download](#)
- Packing: 30 LY(37.4 m²) / Roll

Environmental Attributes

- Low VOC meets CA01350
- Meets LEED criteria for EQc2
- Meets NSF/ANSI 342 certification; check with distributor for actual level
- Meets GB18585-2001

Fire Resistance Attributes

- USA ASTM E84 Class A
- China GB8624 Class B1
- European EN13501 Class B1
- British BS 476 Part 6 & Part 7 Class 0



燃烧性能等级标识





V15-122



V15-123



V15-125



V15-124

Ravelle Texture



Specifications

- Width – 52/54 in (132/137 cm)
- Backing – Osnaburg
- Installation – Reverse Hang / Radom Match
- Weight – 15 OZ/LY (340 gr/m²)
- Hanging Instructions – [download](#)
- Warranty – [download](#)
- Packing: 30 LY(37.4 m²) / Roll

Environmental Attributes

- Low VOC meets CA01350
- Meets LEED criteria for EQc2
- Meets NSF/ANSI 342 certification; check with distributor for actual level
- Meets GB18585-2001

Fire Resistance Attributes

- USA ASTM E84 Class A
- China GB8624 Class B1
- European EN13501 Class B1
- British BS 476 Part 6 & Part 7 Class 0



燃烧性能等级标识





V15-126



V15-127



V15-128

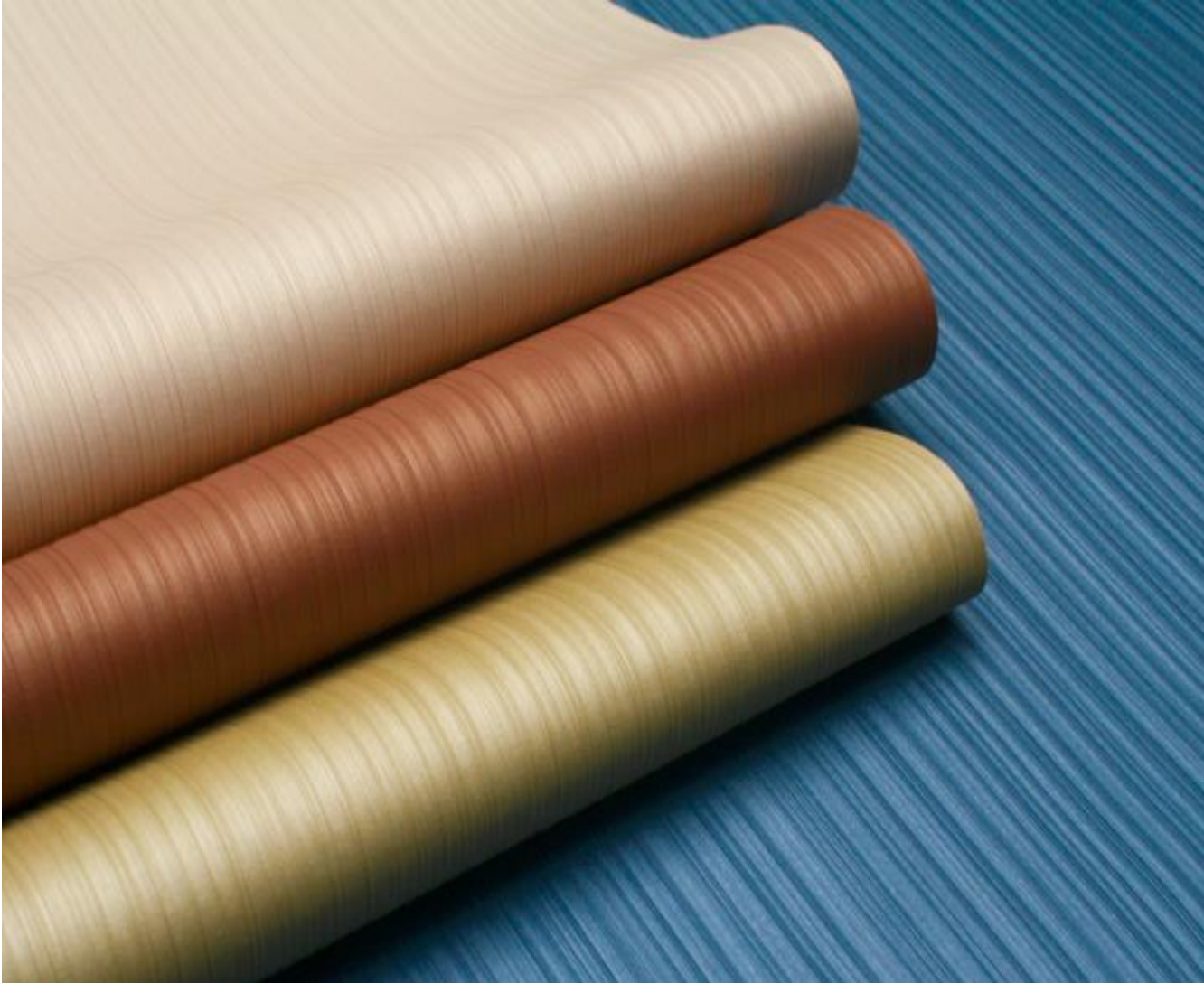


V15-129



V15-130

Skyline



Specifications

- Width – 52/54 in (132/137 cm)
- Backing – Osnaburg
- Installation – Reverse Hang / Radom Match
- Weight – 15 OZ/LY (340 gr/m²)
- Hanging Instructions – [download](#)
- Warranty – [download](#)
- Packing: 30 LY(37.4 m²) / Roll

Environmental Attributes

- Low VOC meets CA01350
- Meets LEED criteria for EQc2
- Meets NSF/ANSI 342 certification; check with distributor for actual level
- Meets GB18585-2001

Fire Resistance Attributes

- USA ASTM E84 Class A
- China GB8624 Class B1
- European EN13501 Class B1
- British BS 476 Part 6 & Part 7 Class 0



燃烧性能等级标识





V15-131



V15-132



V15-133



V15-134



V15-135



V15-136

Regency Silk



Specifications

- Width – 52/54 in (132/137 cm)
- Backing – Osnaburg
- Installation – Reverse Hang / Radom Match
- Weight – 15 OZ/LY (340 gr/m²)
- Hanging Instructions – [download](#)
- Warranty – [download](#)
- Packing: 30 LY(37.4 m²) / Roll

Environmental Attributes

- Low VOC meets CA01350
- Meets LEED criteria for EQc2
- Meets NSF/ANSI 342 certification; check with distributor for actual level
- Meets GB18585-2001

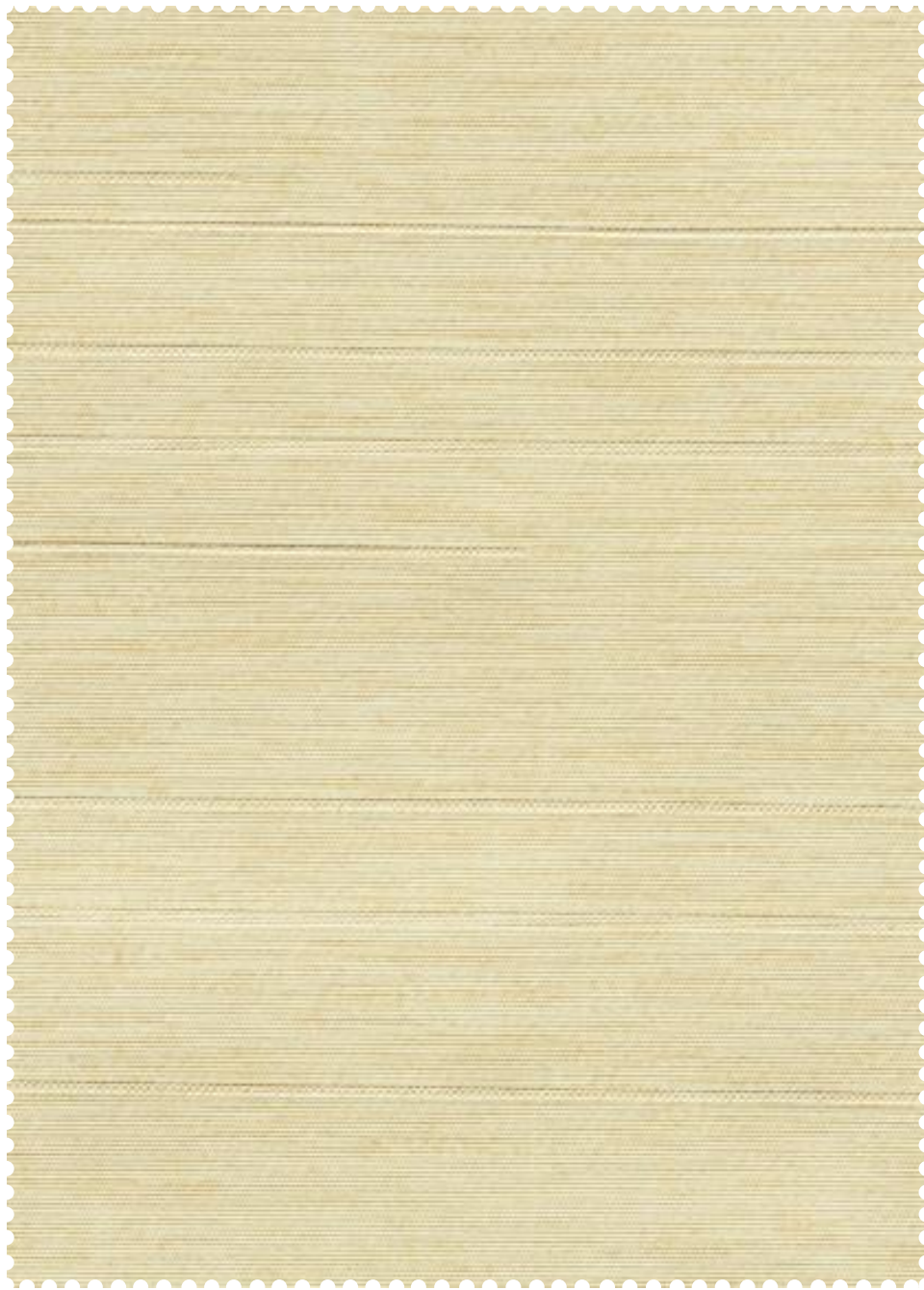
Fire Resistance Attributes

- USA ASTM E84 Class A
- China GB8624 Class B1
- European EN13501 Class B1
- British BS 476 Part 6 & Part 7 Class 0



燃烧性能等级标识





V15-137



V15-138



V15-139



V15-140



V15-141



V15-142

Embarcadero



Specifications

- Width – 52/54 in (132/137 cm)
- Backing – Osnaburg
- Installation – Reverse Hang / Radom Match
- Weight – 15 OZ/LY (340 gr/m²)
- Hanging Instructions – [download](#)
- Warranty – [download](#)
- Packing: 30 LY(37.4 m²) / Roll

Environmental Attributes

- Low VOC meets CA01350
- Meets LEED criteria for EQc2
- Meets NSF/ANSI 342 certification; check with distributor for actual level
- Meets GB18585-2001

Fire Resistance Attributes

- USA ASTM E84 Class A
- China GB8624 Class B1
- European EN13501 Class B1
- British BS 476 Part 6 & Part 7 Class 0



燃烧性能等级标识





V15-143



V15-144



V15-145



V15-146



V15-147



V15-148

Zephyr



Specifications

- Width – 52/54 in (132/137 cm)
- Backing – Osnaburg
- Installation – Reverse Hang / Radom Match
- Weight – 15 OZ/LY (340 gr/m²)
- Hanging Instructions – [download](#)
- Warranty – [download](#)
- Packing: 30 LY(37.4 m²) / Roll

Environmental Attributes

- Low VOC meets CA01350
- Meets LEED criteria for EQc2
- Meets NSF/ANSI 342 certification; check with distributor for actual level
- Meets GB18585-2001

Fire Resistance Attributes

- USA ASTM E84 Class A
- China GB8624 Class B1
- European EN13501 Class B1
- British BS 476 Part 6 & Part 7 Class 0



燃烧性能等级标识





V15-149



V15-150



V15-151



V15-152



V15-153



Pattern Name	Pattern Number	Weight	Backing	Installation	Roll Size
Fiji	V15-101 - V15-106	15 oz/ly (340 gr/m ²)	Scrim	Reverse Hang/Random Match	52" - 54" * 30 Yards
Bristol	V15-107 - V15-111	15 oz/ly (340 gr/m ²)	Scrim	Reverse Hang/Random Match	52" - 54" * 30 Yards
Brio	V15-112 - V15-116	15 oz/ly (340 gr/m ²)	Scrim	Reverse Hang/Random Match	52" - 54" * 30 Yards
Halcyon	V15-117 - V15-121	15 oz/ly (340 gr/m ²)	Scrim	Reverse Hang/Random Match	52" - 54" * 30 Yards
Omni	V15-122 - V15-125	15 oz/ly (340 gr/m ²)	Scrim	Reverse Hang/Random Match	52" - 54" * 30 Yards
Ravelle Texture	V15-126 - V15-130	15 oz/ly (340 gr/m ²)	Scrim	Reverse Hang/Random Match	52" - 54" * 30 Yards
Skylines	V15-131 - V15-136	15 oz/ly (340 gr/m ²)	Scrim	Reverse Hang/Random Match	52" - 54" * 30 Yards
Regency Silk	V15-137 - V15-142	15 oz/ly (340 gr/m ²)	Scrim	Reverse Hang/Random Match	52" - 54" * 30 Yards
Embarcadero	V15-143 - V15-148	15 oz/ly (340 gr/m ²)	Scrim	Reverse Hang/Random Match	52" - 54" * 30 Yards
Zephyr	V15-149 - V15-153	15 oz/ly (340 gr/m ²)	Scrim	Reverse Hang/Random Match	52" - 54" * 30 Yards

SPECIFICATIONS

- 52-54" (132/137 cm) width.
- Meets/Exceeds CCC-W-408D & W101 Specifications
- High tear and tensile strength
- Highly cleanable & stain resistant
- Fire Certification - Class A - ASTM E84
- Fire Certification-GB8624-2012-B1(B-s2,d0, t0)
- Color fast water-based inks
- Low VOC CA01350 (Indoor Air Quality)
- No formaldehyde or heavy metals
- Meets/Exceeds CB18185-2001 Standard for harmful substances
- Meets BS476 Part 6/7-British Class 0 Standard
- Non-ortho phthalate plasticizers
- Visit versawallcovering.com for technical information.

WARRANTY

Versa products are guaranteed to be free of defects in workmanship and materials for five years.



VERSA[®]
WALLCOVERING

versawallcovering.com